



Annastar



117' (35.7 m) DELTA

LOA:	117' (35.7 m)	Year:	Mfg-1996 Model-1996
Beam:	26' (7.9 m)		Refit-2008
Draft:	Max 7' (2.1 m)	Mfg:	DELTA
Speed:	11 knots @1400 rpm / 15 knots @1850 rpm	Type:	Motor Yacht Long Range Cruiser
Location:	Cruising (Florida - S.E.)	Price:	7,499,000 USD

Andy Kniffin
CPYB
(954) 292-0629
andy@akyachts.com
www.akyachts.com

Additional Specifications For Annastar:

LOA:	117' (35.7 m)	Year:	Mfg-1996 Model-1996
Mfg. Length:			Refit-2008
Beam:	26' (7.9 m)	Mfg:	DELTA
Draft:	Max 7' (2.1 m)	Model:	LRC
Clearance:	40' (12.2 m)	Type:	Motor Yacht
Hull Mtrl:	Fiberglass		Long Range Cruiser
Hull Cnfg.:	Full Displacement	Top:	Hardtop
Hull Designer:	Delta Design	Speed:	11 knots @1400 rpm / 15 knots @1850 rpm
Deck Mtrl:	Composite Fiberglass	Engines:	2xCaterpillar 3412
Disp:	220 short ton (200 tonne)		624 HP
Range:	4000	Engines Year:	
Int Designer:		Staterooms:	3
Ext Designer:		Sleeps:	6
Fuel Cap:	10000 g (37850 l)	Heads:	4
Water Cap:	1500 g (5678 l)	Crew Quarters:	3
Holding Tank:	100 g (379 l)	Crew Berths:	5
Flag:	Cayman	Captain Cabin:	Yes
Location:	Cruising (Florida - S.E.)	Classifications:	NONE
		Class Type:	
		MCA:	
		ISM:	
		Price:	7,499,000 USD

Accommodations and Layout

Enter the **salon** from the aft deck via double Freeman hinged doors. To starboard is a full-sized wetbar. Forward is an entertainment island for the pop-up TV and media storage with a stairway to owner/guest staterooms behind it. To port is a sofa and two easy chairs w/ottomans. Forward of the salon to port is a private **study**, complete with built-in teak bookshelves & file cabinets, loveseat and a desk.

A hallway to starboard leads to the steps up to the raised pilothouse, a dayhead across from a door to the starboard walkaround deck, a doghouse for equipment, access to the crew area and engine room, then the galley and an elegant formal dining area (seats 6).

The **guest** accommodations are two mirror image side-by-side twins. Each have their own baths with shower stalls.

The **master stateroom** is below and forward with a king-sized bed facing athwartships and a pop-up TV built into the foot of the bed. Several closets, a vanity and a multitude of drawers are evident. The starboard area features an enormous bath, complete with a shower stall,

Andy Kniffin
CPYB
(954) 292-0629
andy@akyachts.com
www.akyachts.com

Jacuzzi tub, double-sink vanity and separate water-closet.

The **décor** throughout features satin-finished teak woodwork in a traditional style, including gorgeous teak flooring on the stairways and foyer. All furnishings including carpet, window treatments, sofas and chairs, mattresses, bedcovers, etc. were updated in 2008. Baths feature marble countertops and tile flooring. Door and cabinet hardware is polished brass.

The **crew** area (sleeps 6) consists of a large crew mess area complete with microwave, sink, fridge and settee. The captain's stateroom features a double bed with attached bath. Twin crew staterooms with over/under bunks are mirrored forward, with a laundry room behind and to starboard. The engine room is accessed from this area as well.

The **wheelhouse** features a well-laid out helm area with modern electronics. A watch berth is to starboard. A Navigation station is aft and a working desk is to port. Stairways lead up to a sliding door to the Flybridge.

Galley and Appliances

The **galley** is commercial grade with foam vinyl flooring; making it easy on the feet. Plenty of cabinet/work space and brightly lit with a large window and fluorescent lighting. The countertops are corian. A sliding pass-thru services the formal dining room. All appliances have been replaced in 2008.

Viking stainless steel appliances (6.2008)

Oven (galley)

Convection oven (galley)

Microwave (galley)

Dishwasher (galley)

Icemakers (galley, FB)

Bar fridges (3) (FB, crew mess)

Trash compactor (galley)

Wine coolers (2) (doghouse)

Kitchenaid cooktop (5 burner, galley)

Scotsman icemaker (salon bar)

Drink fridges (msr, salon bar)

Maytag washer and dryer (6.2008) (laundry crew area)

GE combo washer/dryer (6.2008)(lazarette)

SubZero full-sized refrigerator (galley)

Traulsen freezer (crew mess)

Chest freezer (lazarette)

Propane grill (FB portable with 20# tanks)

Dyson vacuum cleaner

Electronics and Entertainment

Anschutz Nautopilot D (FB, PH)

Anschutz 20 Gyro compass (repeater FB)

Plath magnetic compass w/Sonde

(2) Furuno 2110 radars w/ARPA (96 nm and 48 nm color)

Furuno Navtex NX300 (1.2008)

Furuno FCV 581 color video sounder

Andy Kniffin

CPYB

(954) 292-0629

andy@akyachts.com

www.akyachts.com

Datamarine Link wind/speed/depth 6 displays bow/stern transducers
HP 761C/ Pentium 4 navigation computer
Transas Navi-Sailor 3000 Navigation software (updated 1.2008)
Furuno AIS (1.2008)(diplays on Transas screen)
(4) VEI monitors (3-wheelhouse, 1-FB)
(2) Northstar 6000i GPS (1.2008)
HP C7180 printer/fax/scanner (1.2008)
Nera Fleet 55 Satellite voice/fax/data (1.2008)
KVH Tracphone VSAT(1.2008)
Panasonic hybrid telephone system (10 phones/9 lines) (1.2008)
Telular SX4e digital TDMA cellular phone
SEA 330 SSB
SEA 156 Shipmate RS8300 VHF
Standard Horizon loudhailer
Simon color security camera system (5 cameras ER, Aft deck, side decks and Mast)
(1.2008)(displays on VEI)
CAT digital tachometers with analog gauges (FB and wheelhouse)

Entertainment

SeaTel 3004 satellite television system w/9 receivers (1.2008)

Salon

- LP 50 plasma TV (salon)
- Denon DVD player
- Denon CD player (5 CD)
- Denon Stereo receiver w/surround sound
- Single touch remote control

LG 42 plasma TV (MSR) with DVD player

LG flatscreen TV s (8) w/dvd players (each stateroom)

Pioneer am/fm/cd player (1.2008)(wheelhouse)

Waterproof entertainment controls aft deck and FB (2008)

Engine Room & Mechanical

The engine room and lazarette were completely Awlgrippd (snow white) 10.2008. ER deckplates are power-coated (flag blue 10.2008) White FRP panels have replaced original soundproofing (11.09). The engine room is quite large, allowing for ease of maintenance and covered with perforated aluminum soundproofing. Engine exhausts vent below the waterline with idle venting above. Air is pulled into the engine room from the flybridge area through a Delta T shutoff. A work bench with toolboxes are conveniently located forward.

Mathers pneumatic engine controls

Racor fuel/water separators (3 FG 1000 each main engine, FG1000 genset)

Alfa Laval MAB 103B fuel polisher (rebuilt 1.2008)

Fuel transfer pumps (stripping and hi-speed)

Tides dripless shaft seals

Groco raw water strainers

Electric/hydraulic steering system

Andy Kniffin

CPYB

(954) 292-0629

andy@akyachts.com

www.akyachts.com

American Bow Thruster 75 hp (twin pto's on gears)
Naiad 404 stabilizers (2) w/digital display upgrade (2008)
(2)Watermaker 1800 gpd watermakers (10.2008)
Headhunter freshwater pumps (2) (1.2008)
(2) 40 usg hot water heaters
Headhunter Tidalwave waster treatment system (MSD Type II) (1.2008)
Microphor heads
Marine Air 12 ton, 4 compressor chilled water air-conditioning system (all new air handlers and controls 1.2008)
Bilge pumps throughout are Par with automatic float switches
Emergency bilge pump is manifolded to each bilge area and powered by a 220 vac pump
Fire suppression systems include Halon in ER and Laz, and a fire pump (220vac) for the deck.

Electrical / Lighting System

(2) Northern Lights gensets (50kw @ 1200 rpm) (12,500 hours and 12,200 hours 10.2008)
Altas Shorepower Transformer - 60 KVA - 11.2009
Gleason 100 amp 240 vac shorepower reel (ER)
Additional 100 amp shorepower cable
240/120 vac distribution panel
24/12 vdc distribution panel
Battery banks (engine, genset, house, electronics)
Mastervolt battery chargers)11.2009
Halogen lighting interior (vac)
Emergency lighting throughout (vdc)
Navigation lighting
Aft flood lights
Exterior courtesy lighting

Hull & Deck Equipment

The hull was painted with Awlgrip flag blue and the rest of the deck and superstructure with Awlgrip snow white in 2007. An expansive aft deck features a dining table to seat 6 comfortably, with extra deck space available to add lounging accessories. The transom is easily accessed via a stairway leading from the aft deck to the lazarette and through a watertight door. Beautifully kept teak decks (re-seamed and sanded 10.2008) are on the main deck and flybridge levels. A high gloss Awlbrite finished teak caprail (10.2008) is featured along wide walkaround decks. The flybridge is covered by an expansive hardtop (2007) with built-in lighting and a forward windscreen. The flybridge also features two settee areas under cover, and two aft of the boat deck with plenty of room for sunning (twin teak chaise lounges are located here).

(2) Muir 7000 anchor windass's (each powered by 7.5 hp Parker Hydraulic power packs)
(2) Pool-N 180 kg anchors (navy style)
(2) 360', ¾" BBB anchor chain
Fortress anchor w/extra-long nylon rode (spare)
Muir hydraulic capstans aft deck (operate off davit power pak)
Nautical Structures 3000 lb davit (fully hydraulic -center-lined on boat deck)

Andy Kniffin
CPYB
(954) 292-0629
andy@akyachts.com
www.akyachts.com

18' Novurania w/Yamaha 115 hp 4-stroke engine (2007)
Marquipt 14' Passarelle (manual)
(2) Marquipt tiderides boarding stairs
Stainless steel hawse's, cleats and bollards conveniently located around deck
Heavy duty stainless steel opening portlights
Freeman watertight exterior doors and hatches
(2) & Finch 12" searchlights (controls FB/PH)
Kahlenberg T3 airhorns
New exterior cushions and covers (1.2008)
Safety
(2) Givens I2 man SOLAS liferafts
EPIRB - 406 gps (6.07)
MOB sling
Life jackets
(12) smoke hoods
Flares
Fenders with rail hooks
Navy yachtbraid docklines with leather chafegear
(2) bulwark entrance gates (each side, port and starboard)
Swim platform - swim ladder, pop-up cleats, bollards and 7 s/s hoop rails.
Heavy duty rubrail around hull with stainless striker

Remarks

Annastar exGatster ex Rainbow was originally ordered by a well-seasoned yachtsman to emulate a bygone traditional style but with the finest construction methods to ensure super-quiet operation and rugged seakeeping (which of course, Delta is known for). The current owner has been dedicated since her purchase in 2007 to upgrade and refit her to the best possible equipment/technology standards and aesthetic appeal. She has been maintained not only with an open checkbook, but by highly skilled and knowledgeable captains; and it certainly shows. Her warm, luxurious interior and oversized ergonomic dimensions will especially appeal to those who appreciate cruising in elegance and comfort. Annastar is a true blue-water, ocean-going vessel; reserved for savvy yachtsmen who appreciate owning the finest of yachts.

Disclaimer

The Company offers the details of this vessel in good faith but cannot guarantee or warrant the accuracy of this information nor warrant the condition of the vessel. A buyer should instruct his agents, or his surveyors, to investigate such details as the buyer desires validated. This vessel is offered subject to prior sale, price change, or withdrawal without notice.

Andy Kniffin
CPYB
(954) 292-0629
andy@akyachts.com
www.akyachts.com

Salon



Salon aft



Andy Kniffin
CPYB
(954) 292-0629
andy@akyachts.com
www.akyachts.com

Salon entertainment center



Study



Andy Kniffin
CPYB
(954) 292-0629
andy@akyachts.com
www.akyachts.com

Galley



Formal Dining



Andy Kniffin
CPYB
(954) 292-0629
andy@akyachts.com
www.akyachts.com

Guest Stateroom

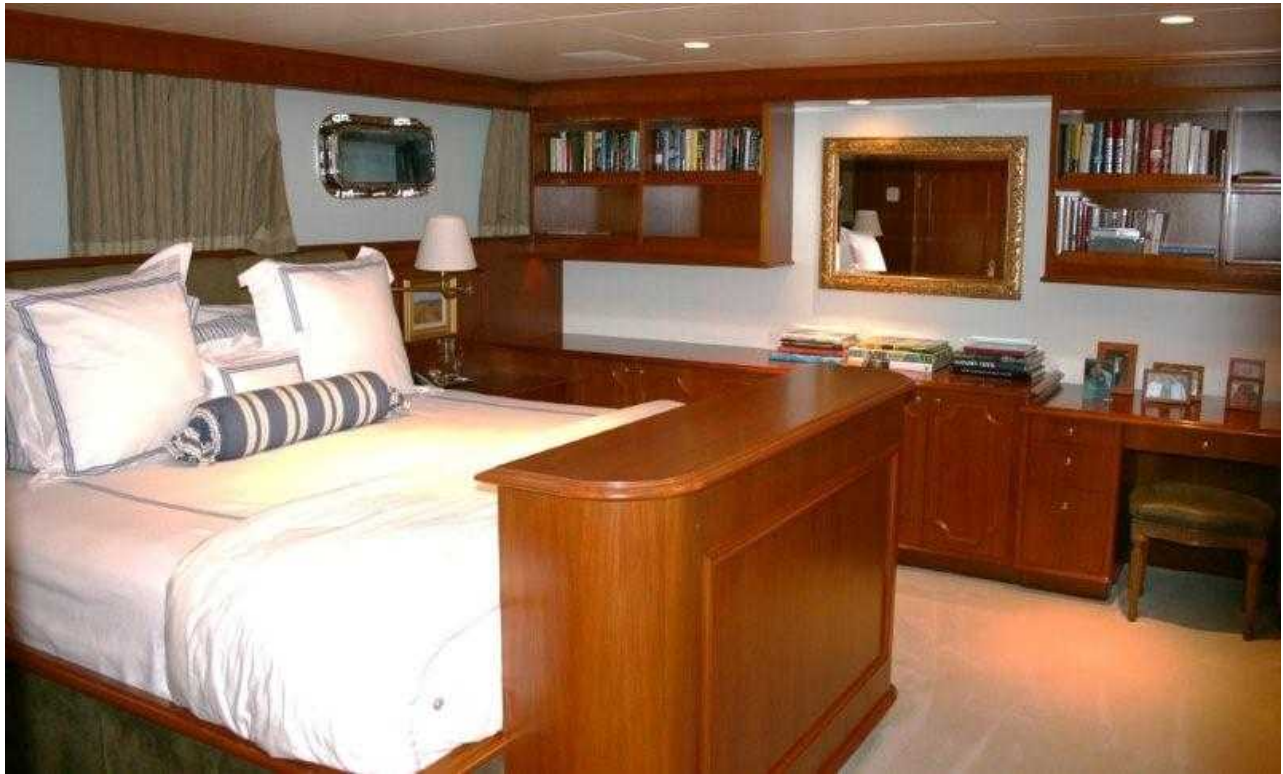


Master Stateroom



Andy Kniffin
CPYB
(954) 292-0629
andy@akyachts.com
www.akyachts.com

Master stateroom



Master bath



Andy Kniffin
CPYB
(954) 292-0629
andy@akyachts.com
www.akyachts.com

Wheelhouse



Salon wetbar



Andy Kniffin
CPYB
(954) 292-0629
andy@akyachts.com
www.akyachts.com

Flybridge helm



Flybridge



Andy Kniffin
CPYB
(954) 292-0629
andy@akyachts.com
www.akyachts.com

Flybridge



Aft deck



Andy Kniffin
CPYB
(954) 292-0629
andy@akyachts.com
www.akyachts.com

Engine Room



Lazarette



Andy Kniffin
CPYB
(954) 292-0629
andy@akyachts.com
www.akyachts.com

Captain stateroom

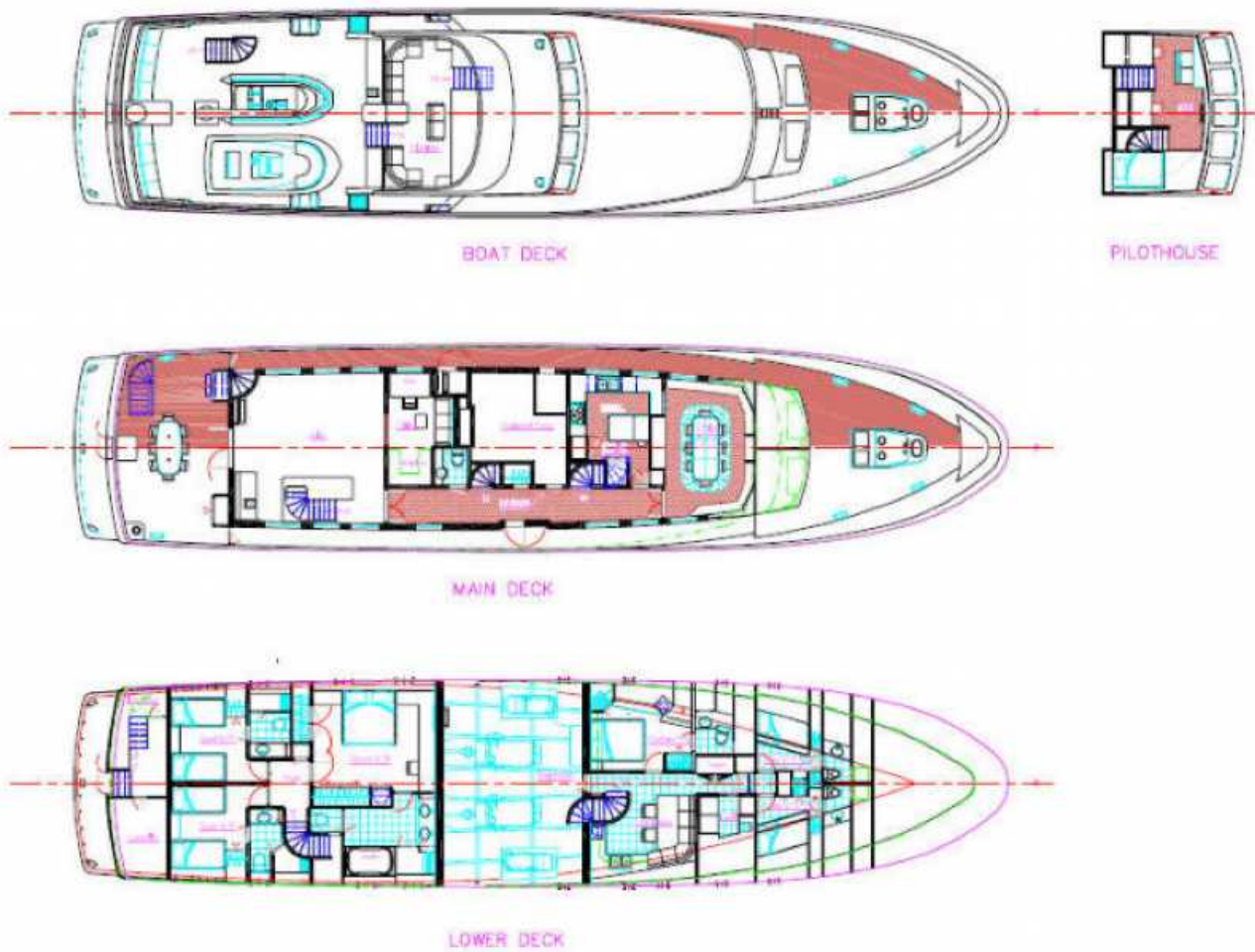


Crew lounge



Andy Kniffin
CPYB
(954) 292-0629
andy@akyachts.com
www.akyachts.com

Layout



Andy Kniffin
CPYB
(954) 292-0629
andy@akyachts.com
www.akyachts.com