



ARIADNE



75' (22.9 m) LIEN HWA

LOA:	75' (22.9 m)	Year:	Mfg-1991 Model-1991
Beam:	18'6" (5.6 m)	Mfg:	LIEN HWA
Draft:	Min 8'2" (2.5 m) Max 8'6" (2.6 m)	Type:	Cruising Sailboat
Speed:	8 knots	Price:	898,000 USD
Location:	Fort Lauderdale, FL, United States		

[Andy Kniffin CPYB|\(954\) 292-0629 USA|andy@akyachts.com|www.akyachts.com](mailto:andy@akyachts.com)

ARIADNE

Page 1

Additional Specifications For ARIADNE:

LOA:	75' (22.9 m)	Year:	Mfg-1991 Model-1991
Mfg. Length:		Mfg:	LIEN HWA
LWL:		Model:	Finya
LOD:	64'3" (19.6 m)	Type:	Cruising Sailboat
Beam:	18'6" (5.6 m)	Rig:	Sloop/Cutter
Draft:	Min 8'2" (2.5 m) Max 8'6" (2.6 m)	Cockpit:	Center
Clearance:	105' (32.0 m)	Speed:	8 knots
Hull Mtrl:	Fiberglass	Engines:	1xCaterpillar 3208N
Hull Cnfg.:	Wing Keel		210 HP , 1050hrs
Hull Designer:	Robb Ladd	Engines Year:	2007
Deck Mtrl:	Fiberglass Sandwich	Staterooms:	3
Disp:	100000 lb (45360 kg)	Sleeps:	6
Ballast Weight:	31500 (14288.3063 kg)	Heads:	3
Ballast Type:	Lead	Crew Quarters:	1
Range:		Crew Berths:	2
Int Designer:		Captain Cabin:	No
Ext Designer:		Classifications:	NONE, NONE
Fuel Cap:	650 g (2460 l)	Class Type:	
Water Cap:	280 g (1060 l)	MCA:	
Holding Tank:		ISM:	
Flag:	USA	Price:	898,000 USD
Location:	Fort Lauderdale, FL, United States		

Accommodations and Layout

*The salon is down curved steps (for heeling) from the pilothouse. Tall yachtsmen will love this boat. The **décor is teak** (gloss and satin finish - refinished 1.08) cabinetry with white laminate walls with teak cabinet fronts throughout. All **flooring is satin finished teak with new loose carpeting** (2.08). A dining area with a table for 6 (settee and chairs) and crystal cabinets above is to starboard. To port is a roomy lounging area with beige corduroy upholstery, cabinetry along the hullside and an entertainment credenza forward.*

*Forward of the salon are **two mirror image guest staterooms**, port and starboard, each with their own head and sharing a center shower stall. These staterooms feature a double bed (with leeboard netting), desktop/vanity with folding seating, and ample storage. Forward of the starboard guest stateroom is another **guest/crew cabin** with a double berth and ensuite head w/a shower.*

Aft of the salon is the galley, running along the starboard hullside aft. A roomy **master stateroom** with a centerline queen berth is aft. Beige ultra-suede settees run on port and starboard sides. Once again, plenty of drawer space is found. Forward is a desktop/vanity. To port and forward is a bath with tub/shower.

All renewed high-end bath and cabinetry hardware (polished brass and stainless) - 2.08

Galley

A long, white corian countertop and sink (Kohler faucet) run the length of the galley, with stove in the center.

- Microwave oven (2.08)
- Force 10 Propane, gimbaled, 3-burner cooktop and stove (2.08)
- Custom butcher block covers for stove
- Grunert 220vac and engine driven refrigeration with 5 compartments for fridge/freezer(2002)
- Broan trash compactor(2002)
- U-line icemaker (salon settee)
- Splendide 2000 washer/dryer (2006)

Electrical System

- Fisher Panda 14kw genset in s/s sound shield (850 hrs @ 1.08)
- Batteries - Genset 8d AGM, Engine (2) 8d AGM (2006)
- House Battery bank - 6-8d AGM batteries (2006)
- Battery monitor (PH)
- (2) extra-duty alternators 160 amp and 135 amp
- Victron 24 vdc Battery charger
- Outback inverter (2500 watt, pure sine wave - doubles as charger for house batteries)
- 12/24 vdc distribution panel (PH)
- 110/220 vac distribution panel (PH)
- Interior halogen lighting - Hella
- Navigation lighting
- Courtesy lighting - cockpit
- Deck lighting - arch
- Searchlight - remote controlled arch
- DC fans throughout interior

Electronics and Entertainment

A modern suite of electronics with redundancy for plotting & communications worldwide is aboard. (PH-pilothouse, CPT-cockpit helm). A work/chart table is provided on the starboard side of the enclosed wheelhouse. The antennae are mounted on an arch aft of the cockpit.

- Furuno Navnet System with black-box integrated radar, gps plotting - navnet controls at

Andy Kniffin CPYB|(954) 292-0629 USA|andy@akyachts.com|www.akyachts.com

ARIADNE

Page 3

both stations (2007)

- Furuno 12" monitor (PH), Nauticomp monitor (CPT)
- Simrad AP25 autopilot (PH)
- (2) Furuno DGPS/WAAS receivers (PH)
- B&G Hydra autopilot (PH, CPT)
- B&G Hydra 2000 speed, depth, wind monitors (2 PH, 2 CPT)
- B&G electronic compass (PH)
- IBM thinkpad laptop with Nobletec 8.1 and Deckman (performance cruising) software
- Icom M802 HF transceiver (PH)
- Icom M604 DSC VHF (PH)
- Icom M402 DSC VHF (CPT)
- Furuno DFAX-207
- Telephone/intercom stations throughout
- Satfind Epirb
-
- Entertainment:
 - Sony am/fm/cd/mp3/xm player (PH)
 - Salon - Sony TV, Sony DVD/VHS, Denon entertainment center
 - MSR - Orian TV w/ VHS, RCA entertainment center

Engine /Mechanical Equipment

The engine room is access via the inboard wall of the galley hallway via two doors. The two steering systems are independent and redundant (note hydraulic must be disengaged to use manual system).

- **CAT 3208 N - 210 hp (1050 hours @ 1.08) on new engine and transmission**
- **Aquadrive shaft isolator (2007)**
- Armco s/s prop shaft (2")
- PSS driplless shaft seal
- 26" Gori 3-bladed folding prop
- Hynautic engine controls
- Racor dual FG500 fuel/water separators w/vacuum gauge
- VDO engine gauges
- Engine alarm (temp and oil)
- **Edson mechanical steering system**
- **Wagner hydraulic steering system**
- **Wolfpack hydraulic waterjet bow thruster**
- **Watermaker (900 gpd - 1.07)**
- **Balmar 2 stage fresh water pressure system**
- Balmar sea water pump
- Tank tender gauge
- (2) Holding tanks with Y-valves, deck pump-out and macerator
- Royal Flush head aft, Sealand heads forward

Andy Kniffin CPYB|(954) 292-0629 USA|andy@akyachts.com|www.akyachts.com

ARIADNE

Page 4

- Rule 3500 Bilge pump (main bilge in keel) w/bilge alarm
- Engine driven bilge pump
- Manual bilge pump

Hull and Deck

The cockpit features a 4' wheel with a helm chair, **dodger and tan bimini top** (clear panel for sail inspection - all renewed 2007). Forward of this is an enclosed, air-conditioned **pilothouse** with another helm station (good visibility via safety-glass windows) , gimbaled bench seat to port and a work/instrument station to starboard.

The hull construction is FRP (Nytex fiber and vinylester resin for superior strength/weight ratio) laminated Airex foam coring. Awlgrip epoxy primer and Dupont Imron Navy blue paint (2002).

Deck, cabin soles and bulkhead construction is FRP laminate (end-grain balsa-vacuum/bagged). Outboard decks are **teak covered**. Lo-profile house is painted non-skid.

A fin keel with wings and lo-profile hull-design translate into high performance handling.

- Bruce & CQR 110# anchors w/ 300' ½"BBB hi-tensile chain.
- Two anchor pulpits
- Maxwell 4000 windlass (2002)
- **TNT tender lift with a built-in stairway on transom**
- **13'6" Novurania RIB w/40 hp Yamaha engine (2003)**
- 6 person Switlik liferaft (2007)
- (13) Lewmar deck hatches - new lexan (1.08)
- (7) deck skylight prisms (2007)
- (15) opening s/s portlights
- Sun awning
- Cockpit cushions and helm chair
- (2) Dorades w/guards/grabs
- S/s stanchions w/lifelines around deck
- New bottom paint (1.08)
- Rubrail w/ stainless steel striker
- Emergency rudder

Sails and Rigging

The mast holds 3 spreaders and was awlgripped in 2006. Sails were purchased new in 11.06.

- **Rondal hydraulic furling headsail and staysail** (North BDL 155% headsail, North BDL staysail)

Andy Kniffin CPYB|(954) 292-0629 USA|andy@akyachts.com|www.akyachts.com

- **Rondal rollaway hydraulic mast** (North BDL Mainsail w/vertical battens and Kevlar thread)
- Rondal hydraulic boom outhaul
- Navtec hydraulic boom vang
- Navtec rod rigging
- **Navtec hydraulic backstay**
- Halyards and sheets (2007)
- **Barient hydraulic winches**
- Barient manual winches
- (5) locking winch handles

Remarks

"Ariadne" is a high performance, blue-water cruiser, designed by Robb Ladd and custom built by the Lien Hwa yard in Taiwan (the same yard that built most of the larger Little Harbors). Her features included a sleek profile, outstanding sailing performance, dual helm stations (pilothouse and cockpit), beautiful teak interior, a huge aft master stateroom plus 3 guest staterooms, Rondal mast and headsail furling system, wing keel, powered dinghy lift on transom, new CAT power, the latest electronics and all of the amenities for world-class exploration in comfort.

"Ariadne" has benefited from a knowledgeable owner who has spared no expense to make her the best in her class. She is an exciting passagemaker - sailing extremely well via a versatile cutter rig and with the benefit of strong engine power for motorsailing. Her quality is on par with fine European and North American built sailing yachts. She can (and has been) cruised long distances with only 2 persons. Her itinerary over the last few years has included Hawaii, Mexico and California and through the Panama Canal several times to the East coast.

Savvy yachtsmen will immediately recognize "Ariadne" as a rare opportunity to own a beautiful, unique and fully-founded sailing yacht at a very attractive price. Located in Fort Lauderdale to be sold by a serious seller.

Disclaimer

The Company offers the details of this vessel in good faith but cannot guarantee or warrant the accuracy of this information nor warrant the condition of the vessel. A buyer should instruct his agents, or his surveyors, to investigate such details as the buyer desires validated. This vessel is offered subject to prior sale, price change, or withdrawal without notice.

Salon Forward view



Salon Port view



Andy Kniffin CPYB|(954) 292-0629 USA|andy@akyachts.com|www.akyachts.com

ARIADNE

Page 7

Salon Dinette



Galley



Andy Kniffin CPYB|(954) 292-0629 USA|andy@akyachts.com|www.akyachts.com

ARIADNE

Page 8

Port guest stateroom



Starboard guest stateroom



Andy Kniffin CPYB|(954) 292-0629 USA|andy@akyachts.com|www.akyachts.com

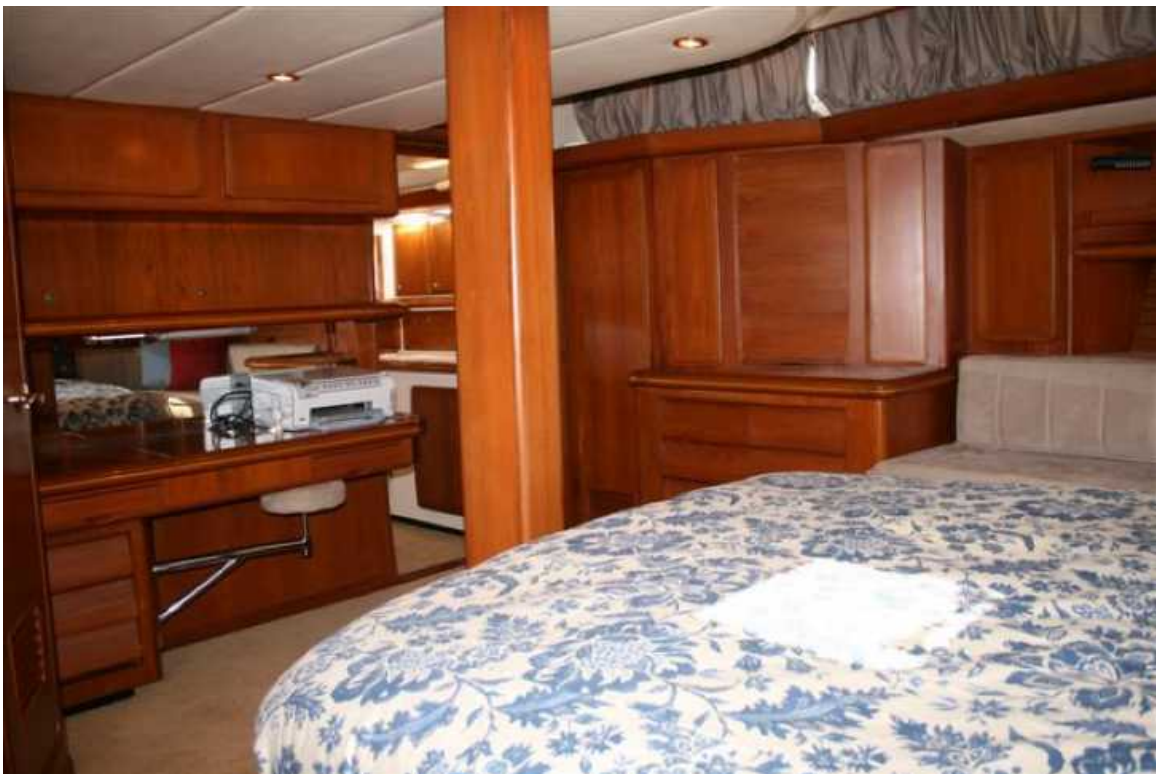
ARIADNE

Page 9

Master stateroom aft view



Master stateroom forward view



Andy Kniffin CPYB|(954) 292-0629 USA|andy@akyachts.com|www.akyachts.com

ARIADNE

Page 10

Master Stateroom bath



Engine Room



Andy Kniffin CPYB|(954) 292-0629 USA|andy@akyachts.com|www.akyachts.com

ARIADNE

Page 11

Pilothouse



Cockpit



Andy Kniffin CPYB|(954) 292-0629 USA|andy@akyachts.com|www.akyachts.com

ARIADNE

Page 12

Foredeck View



Pilothouse deck view



Andy Kniffin CPYB|(954) 292-0629 USA|andy@akyachts.com|www.akyachts.com

ARIADNE

Page 13

Transom



Stbd Stern View



Andy Kniffin CPYB|(954) 292-0629 USA|andy@akyachts.com|www.akyachts.com

ARIADNE

Page 14

