

Marazul



98' (29.9 m) POOLE CHAFFEE Raised Pilothouse CMY

LOA: 98' (29.9 m)
Beam: 24' (7.3 m)
Draft: Max 6'2" (1.9 m)
Speed: 10 knots
Location: Mexico

Year: Mfg-1986 Model-1986
Refit-2007
Mfg: POOLE CHAFFEE
Type: Motor Yacht
Ocean Going
Price: 3,200,000 USD

Additional Specifications For Marazul:

LOA:	98' (29.9 m)	Year:	Mfg-1986 Model-1986 Refit-2007
Mfg. Length:		Mfg:	POOLE CHAFFEE
Beam:	24' (7.3 m)	Model:	Raised Pilothouse CMY
Draft:	Max 6'2" (1.9 m)	Type:	Motor Yacht Ocean Going
Hull Mtrl:	Aluminum	Top:	With Flybridge Open W/Bimini
Hull Cnfg.:	Full Displacement	Cockpit:	
Hull Designer:		Speed:	10 knots
Deck Mtrl:	Aluminum	Engines:	2xCaterpillar 3412TA 875 HP , 3200hrs
Disp:		Engines Year:	1986
Range:	3000	Staterooms:	5
Int Designer:		Sleeps:	10
Ext Designer:		Heads:	5
Fuel Cap:	8900 g (33687 l)	Crew Quarters:	2
Water Cap:		Crew Berths:	5
Holding Tank:	300 g (1136 l)	Captain Cabin:	No
Flag:	US	Price:	3,200,000 USD
Classifications:	None		
Class Type:			
MCA:			
ISM:			
Location:	Mexico		

Walkthrough and Layout

Sleeps 8 owners and guests in four double staterooms, each with private baths. A convertible office accommodates two more guests. Two crew staterooms accommodate 5 -6.

Enter a roomy salon via twin glass, frameless doors from the aft deck, to starboard is a large sofa pit area and to port is an entertainment console with another couch forward. A large dining table (seats 10) is next with a built-in centerline bar forward.

Along the port side is a foyer area with access to the port walkaround deck, a dayhead, access to the galley, stairs up to the raised pilothouse and down to the guest/crew quarters.

The **Owner's Stateroom** is forward on the main deck with a king-size centerline bend. This suite features built-in, beige lacquered furnishings including two vanities, a settee to port, large cedar-lined, his/hers closets (digital safe), overhead deck hatches and viewing windows with privacy curtains. The owner's private bath (all new marble flooring and counters) has his/hers vanities and a sunken Jacuzzi tub.

Guest quarters are accessed via a stairwell by the galley. To port and forward is a convertible office w/pullout sofa. Opposite is a guest stateroom w/a pullout queen lower and a twin Pullman berth. These two rooms share a head w/stall shower. Aft to starboard is an ensuite stateroom which allow twin berths to convert to a centerline king bed. To port is an ensuite, centerline queen stateroom. A linen closet is in the hallway and a laundry room is forward from the

hallway.

Crew quarters are forward with crew lounge, private Captain's cabin w/private head and four bunks forward with head and stall shower.

Interior furnishings feature maple burl paneling, lacquered wood surfaces and muted, earth-tone soft goods (all renewed 2008). Baths and heads have new cream-colored marble flooring and countertops (all renewed 2008). Carpeting is beige and renewed (except salon). Overhead panels throughout have been renewed.

The raised pilothouse features more than adequate workspace for navigating and a large bench seat to starboard. This area has benefited by new teak and holly flooring, upholstery, new Stidd chairs, hatch, windows and overhead panels. A stairway on the mid-port side leads to the upper helm and flybridge.

Galley

Located forward of the salon and dining room to starboard. It is commercially designed with gourmet preparation for large parties in mind. All stainless steel surfaces and appliances with good flow and accessibility and plenty of under-counter storage. On-deck entrance starboard side.

Sub-Zero refrigerator (double door stand-up)
(3) Custom freezers (80 cu. Ft. - located crew area)
GE Dishwasher
Kitchenaid Trash Compactor
Garbage disposal
Sharp microwave oven
(2) Thermador convection ovens
Meile 6 burner stove
Double stainless steel sink
Twin s/s BBQ grills (propane) on flybridge

Laundry:

Dedicated room located aft and starboard of crew area.

(2) commercial Maytag washers

(2) commercial Maytag dryers

(2) 47 gallon, hotwater heaters

Bar (salon)

Sub-zero 249 refrigerator

Kitchenaid icemaker

Drink dispenser with chiller

Wine -chiller (2008 -24 bottle)

U-line icemaker (flybridge)

Hull & Deck Equipment

Construction is heavy aluminum alloy #5086 - decks, superstructure. 3 watertight bulkheads (8 partial). The hull bottom is composed of 3/8" bottom plating on 3' center with 5/16" hullside plating. The decks are 3/16"x3"x4" L-angle longitudinals on 18" centers (all plating). The boat deck is reinforced for heavy loading and has carried such items as a Ford explorer and a 25' Tiara with twin 150 hp outboards.

The covered aft deck has a large seating area (all new Sunbrella upholstery - 2008) with opposing stairways to the cockpit. A roomy cockpit features a new Pompanette fighting chair and a stainless ladder to the aft flybridge. The foredeck has two seating areas (deck storage beneath) with new cushions and a sunning area on the cabin trunk. The flybridge features a large, U-shaped settee (all new Sunbrella 2008) with a table under a large bimini top (all new w/stainless frame 2008) and another settee facing aft. The flybridge helm has two helm chairs and features a renewed lexan windshield and s/s frame. New teak furniture can be arranged on the flybridge deck to enjoy good weather.

The salon windows have been replaced with new tempered glass windows. The pilothouse windows have been replaced as well (both 2008).

The lazarette is accessed via Freeman deck hatches and houses components for the Atlas shorepower converter. New blowers have been installed and a fresh coat of paint applied.

(4) fuel tanks (al)- integral, fwd engine room (cleaned and inspected 2008)

(1) water tank (al) - beneath crew lounge

(2) holding tanks (al) - aft in laundry room bilge and in fwd engine room bilge

T 44"x 39" 4 blade bronze propellers (protected by keel)

T 3" stainless steel propeller shafts (shafts and wheels both inspected and balanced 2007) - with new rope cutters on shafts

T double arm strut and sterntube w/rubber cutlass bearing for shafting

Dripless shaft seals

T aluminum spade type rudders

Ideal 220 vac double chain gypsy with vertical rope capstan. (rebuilt 2008)

300' port/ 500' stbd ½" chain with two Danforth 250# anchors (all regalvanized 2008)

Aft deck 220 vac capstan (rechromed and rebuilt 2008)

Hydraulic davit - IMT 5016, 6000# rating, 20' reach (two extensions

Novurania 14' RIB w/ Yamaha 50 hp (refinished 2008)

PWC's (new 2008 and mounted outboard overhead on boat deck to allow for more entertaining space)

Live baitwell (stern) 150 gallons (renewed 2008)

(8) rodholders

(2) Rayline searchlights with remotes (rebuilt 2008)

Underwater exhaust system

Air horn (rebuilt 2008)

Docklines and fenders

Portlights with s/s weather shields

New flybridge and cockpit teak decking (2008)

Aft flybridge control station

Compete paintjob (Awlcraft 2000 Matterhorn white - 2008)

Fresh bottom paint (Biocop) (2008)

Jacuzzi (5pp - Flybridge- 2008)

Engine Room & Mechanical

The engine room is accessed via a watertight door in the cockpit. All equipment is easily accessible. Also featured are (2) new FRP workbenches & new perforated ceiling panels.

All hoses and plumbing, valves, thru-hulls, injectors, etc. were completely gone through (with many replaced) 2008.

Twin CAT 3412TA (875 hp) w/250 ZF 3:1 gears (freewheeling capable) Approx 3200 hours SMOH.

fuel consumption:

18gph@1500rpm-single engine / 9 kts

32gph@1500rpm-twin engine /11 kts

50gph@1800rpm-twin engine/12.5 kts

Note that engines have underwater exhausts or transom exhausts controlled by valves (renewed 2008)

Triple Racor FG 1000 water/fuel separators each main (2007)

Dual Racor FG 1000 water/fuel separators each genset

Gulfcoast fuel polishing system (220vac pump and water alarm - new 2008)

Fuel transfer system (3 pumps for redundancy)

Glendenning engine synchronizer

Hynautic engine controls (rebuilt 2007)

Wagner hydraulic steering with power assist

(3) steering stations w/jog, engine, thruster controls

Air intake (boat deck) and exhaust (hullside) 220 vac fans

(8) electric automatic and (2) manual bilge pumps (new 2007)

Cruisair chilled water airconditioning system (3 compressors, with new digital controls - all renewed 2008)

Back-up pumps for A/C, grey and blackwater systems (2008)

Fresh water system (renewed - 2008)

Hot water heaters (2-2008)

Naiad roll stabilizers

Wesmar 50 hp bowthruster (PTO 60kw genset) (serviced 2008)

(2) watermakers (Sea Recovery and Offshore Marine) - overhauled 2008

Oil changing system with waste and fresh oil tankage

Air compressor (engine room)

Dive compressor system

Spare part inventory

Tool box w/ tools (2008)

Safety:

Emergency 220vac fire pump

(2) 33# Halon bottles aft each engine w/temp sensors

(17) 5BC and 10BC dry chemical fire extinguishers

(2) 8 person Avon liferafts w/hydro releases

(2) Type IV ring buoys w/ strobe lights

(19) Type 1 adult and (6) Type 1 child life preservers

Flares

ACR 406 mhz EPIRB

(2) ACR/RLB-14 class "A" Epirb - verify

Bell on foredeck in new stainless steel frame

Electrical System

Northern Lights 65 kw genset (3000 hours) exhausts to flybridge

Northern Lights 65 kw genset (3000 hours)

Kohler 20 kw genset (2008)

Atlas 28 kw Transformer system (100 amp, 190-520vac, 47-63 hz, single or three phase Input
- 208/60hz 3 phase Output) - serviced 2008
110 vac/single phase distribution panel(s)
208vac/three phase distribution panel(s)
24/12 vdc distribution panel(s)
Battery chargers
Professional Mariner 24vdc/ (one each ER & FB)
Professional Mariner 12vdc/50amp(one each ER & FB)
Battery Banks (describe)- covered boxes
 ER - starboard aft
 FB - starboard fwd
Capac galvanic corrosion monitor - (renewed 2008)
Lighting
24vdc and 120vac Halogen interior
New Catalupi exterior lighting (2008)
 Navigation and anchor 24 vdc lighting
 220vac flood lights (aft boat deck and mast)
 New engine room, lazarette lighting (110vac/24vdc - 2008)
 Underwater lights - transom - 2008

Electronics and Entertainment Equipment

Furuno Navnet System (video depth,plotter and radar) (lower helm 2 screens and 1 screen
FB)
Anshutz Kiel Gyrocompass
New Ritchie 6" Compass
Furuno AD 10S Gyro repeater
Robertson AP9 MK II Autopilot (FB & PH)
Furuno FR 1510 96 mile Radar w/ARPA (PH) -(serviced, 2008)
Furuno 48 mile Radar (FB) (serviced 2008)
Furuno FCV522 Video Depth recorder
Icom IC-M80 VHF(s) (PH)
SEA 156 VHF (FB)
Raytheon 430 Loudhailer
B&G Hercules combi systems (w/6 repeaters msr, salon, FB, aft FB, Capt. Qrt, aft deck)
(overhauled 2008)
Furuno Navtex NX500
Northstar 952X GPS receiver
HP PC (PH) with Nobletec Navigation 7.0 software, (FB Nauticomp monitor)
Icom IC-M700 SSB
Furuno/Skanti TRP 8258S SSB
Seatel Immarsat (2008)
SeaTel SatTv system
Collins aircraft radio
Visiak/RCA CCTV system
Benmar MS3000 Fuel Monitoring system
B&G apparent wind gauge (PH)
Dytek water temperature gauge
Simrad Taiyo ADF
Fuji Meibo Binoculars (fixed on FB)

Panasonic hybrid telephone system w /16 intercom (2008)
Engine, generator and bilge alarm system (overhauled 2008)

Entertainment:

Salon

Sony Disc Explorer 200 (DVD/CD)

Sony DA4ES digital surround sound amplifier

Sony VCR

Kareoke system

QSC stereo amplifiers (2)

42" LCD TV

Sat receiver

Viper lasers (for the party animal)

MSR

Harmon Kardon surround sound receiver/amplifier

JVC VHS

LCD TV

RCA DVD player

Sat receiver

Guest staterooms

LCD TV's w/home theater systems

Pilothouse

Sony AM/FM/CD player w/QSC amplifiers

Remarks

"Marazul" features many desirable features not commonly found on yachts under 120'; such as an on-deck master stateroom plus 4 guest staterooms (US built for easy US charter-ability), transoceanic range, walkaround decks with a 24' beam, a versatile flybridge with the ability to carry a multitude of water toys and a large cockpit to accommodate serious watersports (including a state-of-the-art SCUBA air compressor). She has been expertly refit, painted and redecorated in 2007/2008 and is ready to cruise in all aspects. Experienced yachtsmen will appreciate the heavy aluminum construction and ageless, good looking design. She affords a unique opportunity to purchase a fine sea-keeping yacht that cannot be duplicated today at triple the price.

Easy to inspect anytime west coast Mexico

Salon



Salon



Salon

Guest Stateroom



Guest Stateroom

Flybridge



Flybridge



Flybridge



Pilothouse



Crew Quarters



Crew Lounge



Office/Study



Cockpit



Galley



Guest Bath 1



Guest Bath 2



Master Stateroom



Master Bath



Jacuzzi



Fore deck view



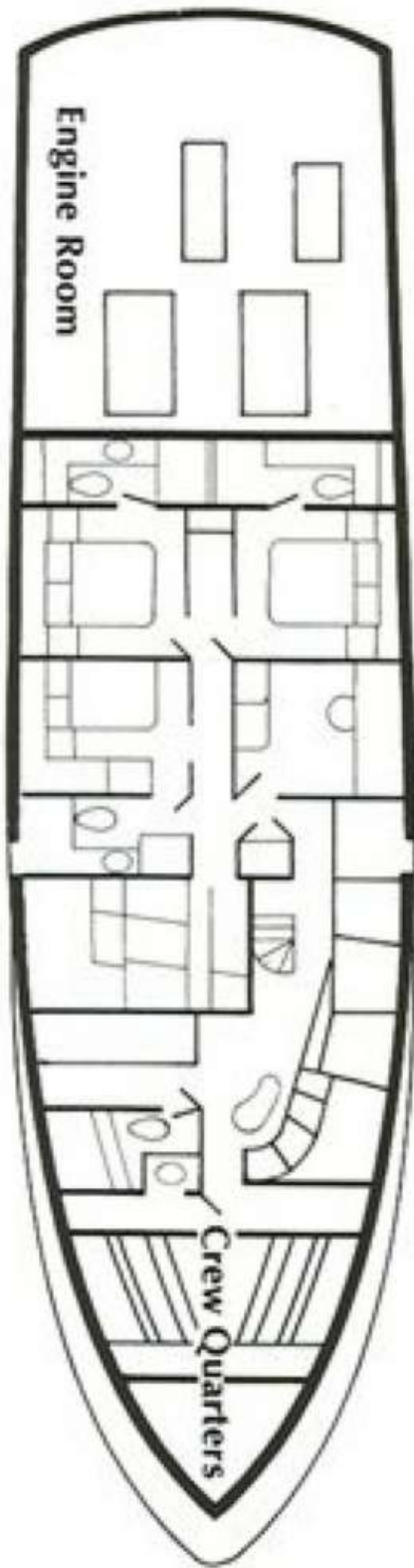
Gensets



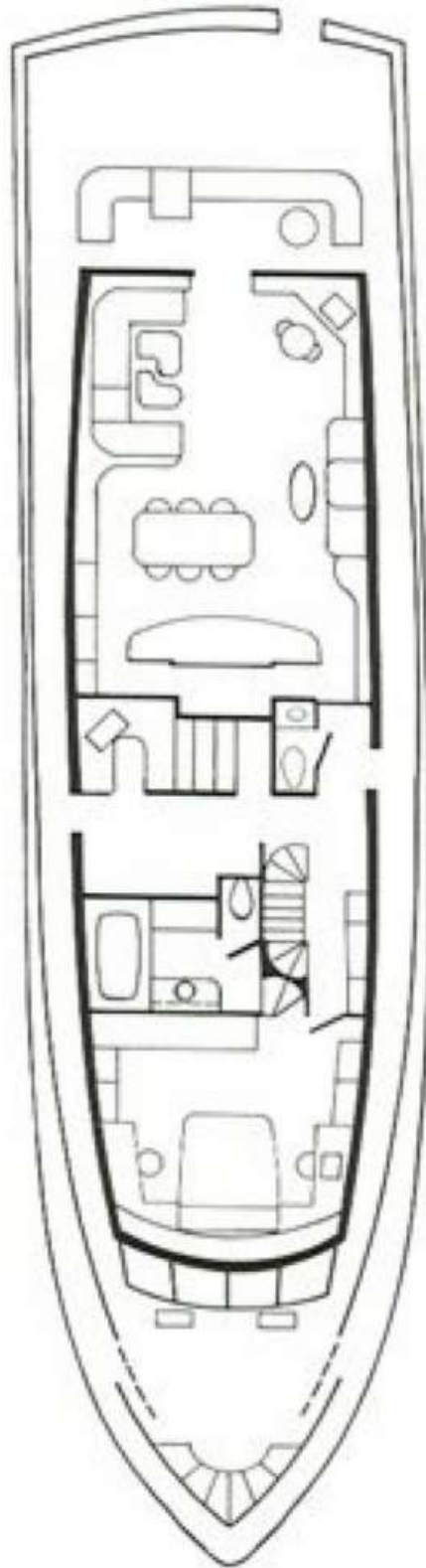
Engine Room



Layout



LOWER DECK



MAIN DECK