

No Doubt



97' (29.6 m) KELLY Houseboat

LOA:	97' (29.6 m)	Year:	Mfg-1991 Model-1991
Beam:	22'1" (6.7 m)	Mfg:	KELLY
Draft:	Max 5' (1.5 m)	Type:	Motor Yacht
Speed:	10 knots / 13 knots		Liveaboard
Location:	Louisiana, United States	Price:	650,000 USD

Additional Specifications For No Doubt:

LOA:	97' (29.6 m)	Year:	Mfg-1991 Model-1991
Mfg. Length:		Mfg:	KELLY
Beam:	22'1" (6.7 m)	Model:	Houseboat
Draft:	Max 5' (1.5 m)	Type:	Motor Yacht
Hull Mtrl:	Steel		Liveaboard
Hull Cnfg.:	Full Displacement	Top:	
Hull Designer:		Cockpit:	
Deck Mtrl:	Steel	Speed:	10 knots / 13 knots
Disp:		Engines:	2xGeneral Motors
Range:			671 N
Int Designer:			165 HP
Ext Designer:		Engines Year:	1991
Fuel Cap:	1500 g (5678 l)	Staterooms:	4
Water Cap:	1500 g (5678 l)	Sleeps:	
Holding Tank:	76 g (288 l)	Heads:	
Flag:	US	Crew Quarters:	
Classifications:	None	Crew Berths:	
Class Type:		Captain Cabin:	No
MCA:		Price:	650,000 USD
ISM:			
Location:	Louisiana, United States		

Accommodations and Layout

Four staterooms on main deck level with Master stateroom aft with an ensuite head. Forward is another stateroom with an ensuite head. The two forward staterooms share a bath. Forward and below are two single berths for crew.

A wing door to port opens up to a walkaround deck with access to the foredeck, aft deck and oversized swim platform. Exterior stairs also lead up to the wheelhouse.

Forward stairs from the main deck lead up to the pilothouse/salon deck. The wheelhouse is forward with a centerline helm and a settee/berth to port. An expansive, open salon/greatroom area is aft with a dayhead to starboard and an open galley with an island counter. Further aft is a large deck area.

Forward and starboard is a stairway to the flybridge/sundeck, which is mostly covered with a railing surrounding it. Exterior stairs access the aft deck.

Galley

The galley has been completely renovated with all new cabinetry and Kenmore appliances (July 2007)

Stove and cooktop (30")
Dishwasher
Microwave oven
Trash compactor
Sink with faucet
Washer/dryer
Freezer (flybridge)
Wetbar (flybridge)

Engine Room & Mechanical

The engines are keel-cooled
Engine room blowers (2007)
Engine controls (elec/hyd)
Steering (elec/hyd)
Bow thruster (hydraulic with independent diesel engine)
Air conditioning with reverse cycle heat (new 2007)
Hot water tank (80 usg) (new 2007)
Watermaker (600 gpd) with independent 200 usg tank (new 2007)
Halon fire suppression system (ER - updated) plus handheld fire extinguishers (new 2007)
Bilge pumps (8) automatic (new)2007
Sewage treatment system (76 usg uscg certified type II msd)
Toilet system (house hold toilets)
Freshwater system (2/750 gal. Tanks)

Hull & Deck Equipment

New propeller and shaft guards
Anchor system (hydraulic/electric)
New freshwater tanks
New aluminum framed sliding windows
New showers and sinks throughout
New cabinetry, floors , walls and ceilings (all put in new july 2007)
New sundeck top (covers ¾ of area - aluminum frame w/vinyl covering)
New interior and exterior doors
New fireproof engine room door
Decks are Rhino-lined non-skid
Zodiac tender (life boat) with 5 hp outboard engine

Electrical System

Completely rewired throughout (2007),
(2) KiloPak 30 kw gensets (New - hours 110)
12 vdc and 220/110 vac distribution panels with thermal circuit breakers
Interior and Exterior Lighting (110 v /12 v backup lighting) (2007)
Navigation lighting new 2007
Batteries (house, main starting, genset starting2007) (new) with battery switches 2007
Battery chargers 2007

Electronics and Entertainment

VHF radio

3/10/2009

No Doubt

Page 3

Furuno 1623 Radar
Furuno 1720 Radar
Furuno GP 1900 gps plotter
Depth sounder
Davis Windspeed and temperature gauge
Intercom system
CCTV system w/6 cameras
Ritchie 5" compass

KVH TracVision satellite TV system
HD TV receivers
Sharp DT100 projection TV w/10' screen (salon)
Logitech surround sound system
Philips wireless remote
Sony DVD player
(2) Samsung TV's (sunroom 20"LCD tv)
(4) Toshiba TV's (1 in each stateroom)
Denon receiver (for speaker system)
JBL AM/FM/CD stereo (sundeck) - 6 exterior speakers

Remarks

"No Doubt" is a roomy, rugged houseboat style motor yacht that has the ability to navigate coastal areas and major rivers in safety and comfort. She has been completely renewed inside and out - fully equipped and ready to go.

With dockage becoming less expensive than tenancy, she can also be used as an office or home with the ability to move anywhere in coastal and inland waters!

Salon



Salon

Galley



Galley



Stateroom 1



Stateroom 2



Stateroom 3



Stateroom 4



Crew



Game room



Dayhead



Helm



Wheelhouse settee



Sundeck aft view



Engine Room



Engine Room



Engine Room



Sundeck fwd view



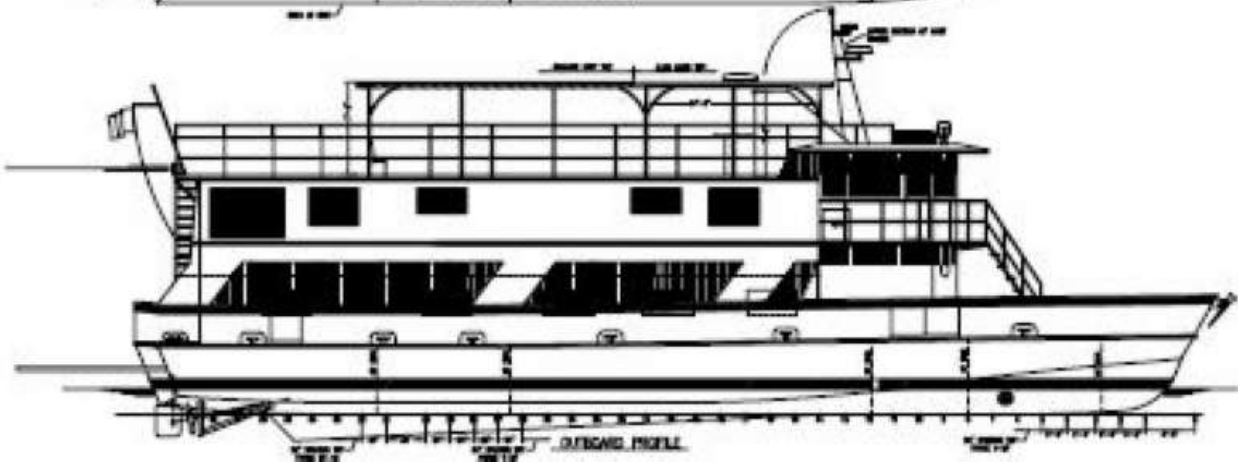
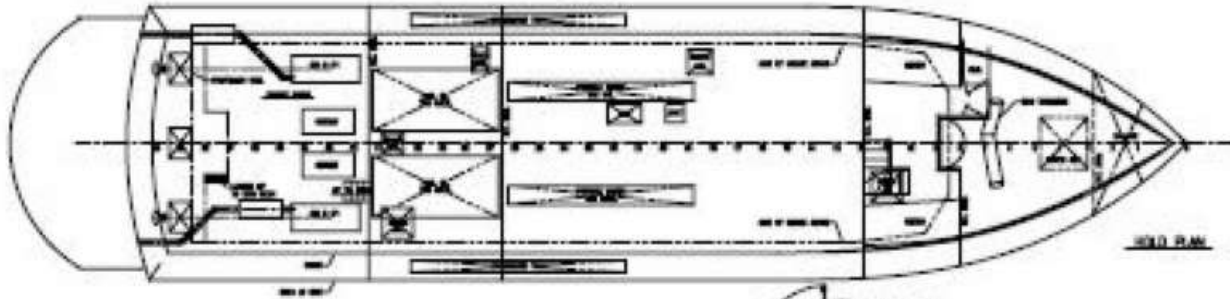
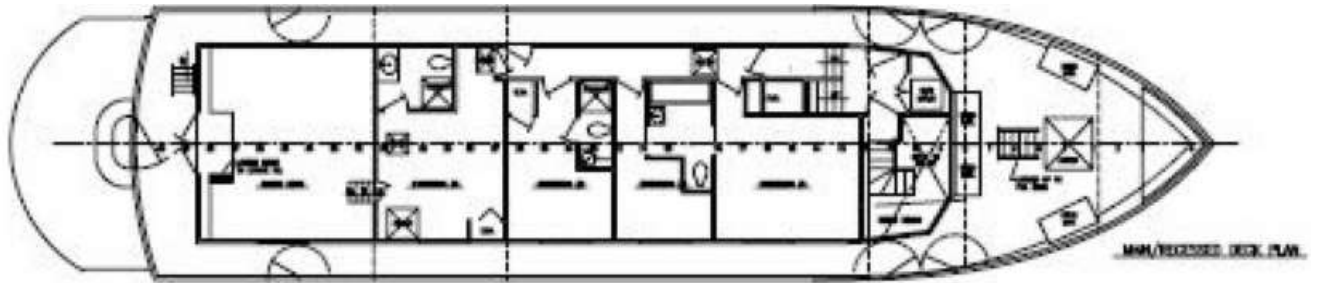
Wheelhouse exterior view



Transom view



Layout



Upper Layout

