

Sis W



127' (38.7 m) BURGER

LOA:	127' (38.7 m)	Year:	Mfg-2003 Model-2003
Beam:	27' (8.2 m)	Mfg:	BURGER
Draft:	Min 6'6" (2 m) Max 6'6" (2 m)	Type:	Motor Yacht Ocean Going
Speed:	10 knots @1100 rpm / 15 knots @1870 rpm	Price:	14,950,000 USD
Location:	Fort Lauderdale, Florida, United States		

Additional Specifications For Sis W:

LOA:	127' (38.7 m)	Year:	Mfg-2003 Model-2003
Mfg. Length:		Mfg:	BURGER
Beam:	27' (8.2 m)	Model:	
Draft:	Min 6'6" (2 m) Max 6'6" (2 m)	Type:	Motor Yacht Ocean Going With Flybridge Open
Clearance:	43' (13.1 m)	Top:	
Hull Mtrl:	Aluminum	Cockpit:	
Hull Cnfg.:	Semi-Displacement	Speed:	10 knots @1100 rpm / 15 knots @1870 rpm
Hull Designer:		Engines:	2xCaterpillar 3508B 1300 HP , 2200hrs
Deck Mtrl:	Aluminum	Engines Year:	2003
Tonnage:	240	Staterooms:	6
Range:	5000	Sleeps:	12
Int Designer:	Beldin Interiors	Heads:	8
Ext Designer:		Crew Quarters:	4
Fuel Cap:	14130 g (53482 l)	Crew Berths:	5
Water Cap:	2550 g (9652 l)	Captain Cabin:	Yes
Holding Tank:		Price:	14,950,000 USD
Flag:	US		
Classifications:	None		
Class Type:			
MCA:			
ISM:			
Location:	Fort Lauderdale, Florida, United States		

Vessel Walkthrough

Owner and guest staterooms - Six to sleep a total of 12

The full beam (big viewing windows) master stateroom is forward on the main deck with an adjacent ensuite stateroom with two bunks (for nanny, children or nurse). The his/hers bath is appointed in onyx and features a center shower and Jacuzzi bathtub.

Below decks are 4 ensuite guest staterooms consisting of two queens aft and two twins forward with a foyer in between.

The crew has 4 ensuite staterooms below and forward (reached from just forward of the galley) to accommodate up to 6 crewmembers. The captain's stateroom is aft of the wheelhouse for 2.

On the main deck, the salon features a comfortable seating area facing an electric fireplace to starboard with a dining table forward. To starboard and forward is a concealed elevator (for a wheelchair) which services the skylounge and sundeck. The galley can be accessed forward of the salon from port or starboard and has a dayhead to starboard.

A stairway just aft of the galley accesses the skylounge , wheelhouse and boatdeck area. A Portuguese walkaround surrounds the wheelhouse with access via a stairway to the foredeck.

Wing stations are found port and starboard.

Aft of the skylounge is a stairway to the sundeck, complete with Jacuzzi, wetbar, lounging areas and another helm station.

Galley

Located at the center of the main deck, the galley is well-suited for professional chefs. Featuring a stainless steel island prep station with a sink, Stainless steel counter tops, cork flooring and abundant storage. A crew dining lounge is adjacent.

Viking 4 burner electric glass top range
Viking exhaust hood
Fisher Paykal 2 drawer dishwasher
GE microwave oven
Viking commercial dishwasher
GE trash compactor

GE Refrigerator Freezer
Sub Zero Icemaker
(2) Sub Zero freezer drawers
Sub Zero Refrigerator
Bloomfield coffee maker
(2) Viking convection ovens
Cuisinart Toaster oven
Wetbar and icemaker (skylounge)
Gas grill, sink and fridge (boat deck)
Wine cellar (guest foyer - for 200 bottles)
3 laundry stations: Lazarette; guest quarters; crew quarters
Lazarette chest type freezer
Beam central vacuum system

Engine Room & Mechanical



Main Engines: (2) Caterpillar Model 3508B diesels, 1300 hp each, with heaters and Walker Air Seps
Engine Hours as of September 2007: 2200 Generator hours as of September 2007: 5100
Gearboxes: ZF Marine, ZF365
Quantum central hydraulic system w/ 2 auxiliary 20 hp electronic monitors
Quantum 150 hp bow thruster
Nautical Structures 4000 lb articulating knuckle boom tender crane w/ full hydraulic function
Nautical Structures telescoping passarelle w/ full hydraulic function

(3) Nautical Structures gantry cranes, aft deck(2) and amidship (starboard)

Lift-a-vator hydraulic integral elevator system
Bauer dive compressor
Hamann USCG Type-II Waste Treatment Plant
Chem-free ozone generator
Delta-T air ventilation system
Emergency fire/ bilge pump system
Edson gray and black water commercial grade diaphragm pumps
Kaydon fuel filtration scrubbing system
Water softener system
(2) Air compressors and storage tank
Work bench with stainless steel sink and bench vise
(2) Watermakers Inc. RO systems, each 2000 gpd
Marine Air chilled water air conditioning, 20 tons, 4 chiller units

Hull & Deck Equipment

Deck Equipment

Muir VCR 8000- two speed (2) fore deck anchor windlasses
Muir VC 4000 (2) aft deck capstans
P & S ¾" G4 chain 400 feet each
P & S 400lb. Talon S.S. anchors
Fortress FX-125 anchor with chain and line rode
Mar-Quip stainless steel boarding ladder
Stainless steel swim ladder
Teak and aluminum swim platform
Swim platform integral fish box
Eskimo Shaved ice system for fish box
Pedestal mounted Pompano fishing chair and rod holders
Electric reel rod holder and pulg
Hydraulic Scissor lift integrated into Euro stern for wheelchair movement between aft deck and swim platform
Fore and aft throw rings (4)
20 life jackets
Dual anchor pockets with thru deck hawse pipes and fresh water wash
Swim platform shower
(4) underwater lights that illuminate the water around the swim platform
Fenders
Fore deck teak seat at stem
Lines
Bell stand on fore deck
Fore deck cuddy storage
Forward and aft Gleason reel systems for shore cords
Aft deck teak furniture
Ships air whistle
Nautical Structures pneumatic/ hydraulic 23'-6" telescoping passerelle, custom width of 35" (27.5" walking area)

Aft deck table and seating
Nautical Structures EZ 4000 crane
(3) Nautical Structures gantry cranes, aft deck(2) and amidship (starboard)
Kahlenberg 5 trumpet air horns and whistle
Boat deck grill station with sink and refrigerator
Boat deck wet locker with refrigerator
Flybridge wet bar with refrigerator, U-line icemaker
Flybridge Jacuzzi
21'6" Northwind aluminum RIB tender, radar arch, radar, VHF, rod holders
130 Honda 4 stroke outboard motor
(2) 10 man Switlik life rafts with hydrostatic release systems
Spare main engine props
Lazarette chest type freezer

Electronics and Navigation

Furuno 96 mile X-band color radar w/ ARPA
Furuno 96 mile S- band color radar w/ ARPA
Furuno AIS vessel ID system
Furuno color depth sounder
(2) Leica MX420 GPS units
(2) Icom MC M602 VHF radios
Brooks & Gatehouse Hydra 2000 wind, depth, speed monitor
(2) B&G remote monitors for Hydra system
C-Plath gyrocompass
C-Plath autopilot
C-Plath rudder angle indicators
Bow Thruster control (proportional/locking)
Searchlight remote control
Air horn & whistle control
Four glass screen monitors, all interchangeable (SiMON, chart plotter, cctv, X-band radar)
Nobletec Admiral plotter software on separate dedicated PC integrated with X-band radar & AIS
Dell tower PC Pentium V
WiFi Network system
Caterpillar Engine CAT-Vision monitor
Closed circuit television system, engine room, mast head, aft deck, P&S side decks
SiMON Vessel monitoring and alarm system w/ dedicated PC
Burger BASICS vessel alarm system
Verizon Internet cellular connect
Icom SSB IC M802 radio
HP Office Jet printer/ fax/ scanner
Panasonic Hybrid Phone System
Global Star Sat com system
Stratos Mini-M Sat com/fax system
Xenon Carlisle & Finch 25,000,000 candle power search light
Glendinning electronic engine controls with manual back-up
Kenwood CD, tape, am/fm player with satellite feed antenna
Ship's signal flag collection with holders
Locking firearms locker

Flybridge Navigation Electronics

All weather multi-function glass screen monitor: Plotter; radar; CCTV, SiMON system

B & G remote monitor: Wind; speed; depth

IC M502 VHF radio

Glendenning engine and transmission controls

Searchlight remote control

Bow thruster control (proportional/locking)

Autopilot and jog steering control

Air horn & whistle control

Wing Station Navigation Electronics

Glendinning engine and transmission controls

Bow Thruster control (proportional/locking)

Jog steering control

Furuno remote W/D/S

Icom VHF radio

Air horn control

Francis search lights 8,000,000 candle power

Electrical System

Generators: (2) Northern Lights: 65 KW each (approx 5200 hours each)

Output: 208v, 3 phase, 60 hertz

Shore power: 240v, 3 phase, 60 hertz

Voltage: 12v/ 24v/110v/220v

SiMON ship's information monitoring and alarm system

Burger A.M.P.S. Ship's information monitor system

Atlas ShorPower converter

Atlas Tec-Power Switchboard and Main Distribution panel

Sentry 12v & 24v automatic battery chargers

Forward and aft Gleason reel systems for shore cords (100 amp)

Auxiliary fore and aft shore cable connections

Remarks

SIS W is fully equipped and ready to cruise immediately. She has been professionally maintained to perfection since new. Note especially the zero speed stabilizers, attractive draft for Bahamas cruising, the economic trans-oceanic range, extra accommodations for guests and crew, and handicap accessibility. She also is designed for fishing and watersports.

Salon



Salon



Master Stateroom



Bath



VIP Stateroom



Guest Stateroom



Skylounge



Pilothouse



Sundeck



Aft deck



Captains Cabin



Elevator



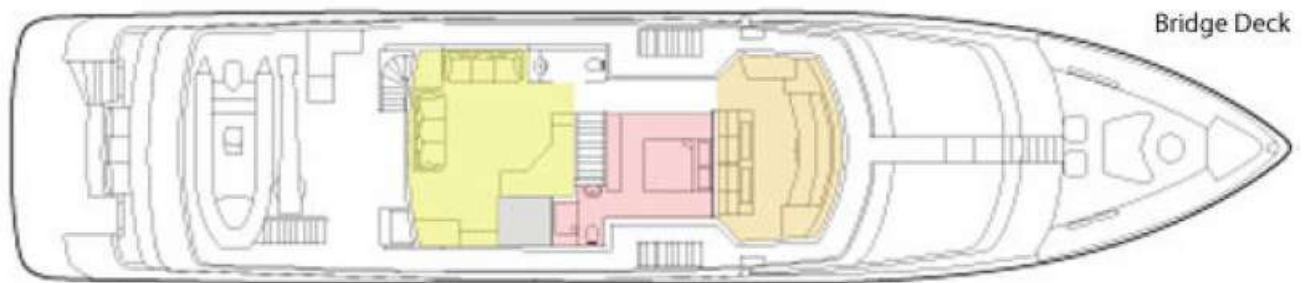
Jacuzzi



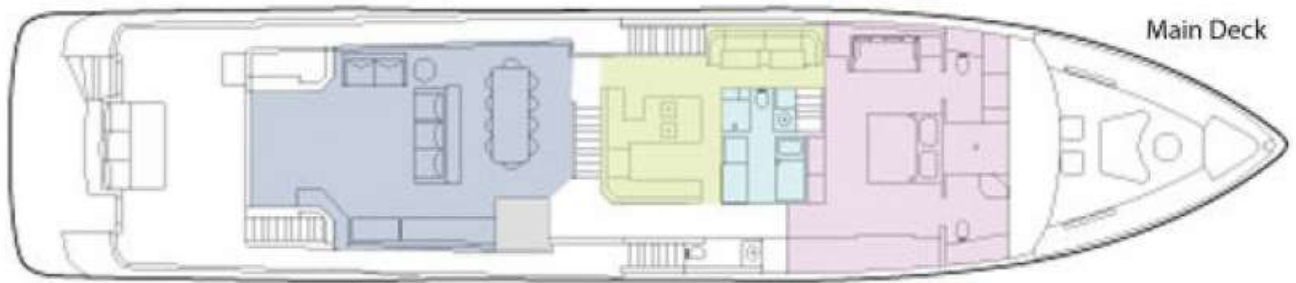
Foredeck



Bridge deck

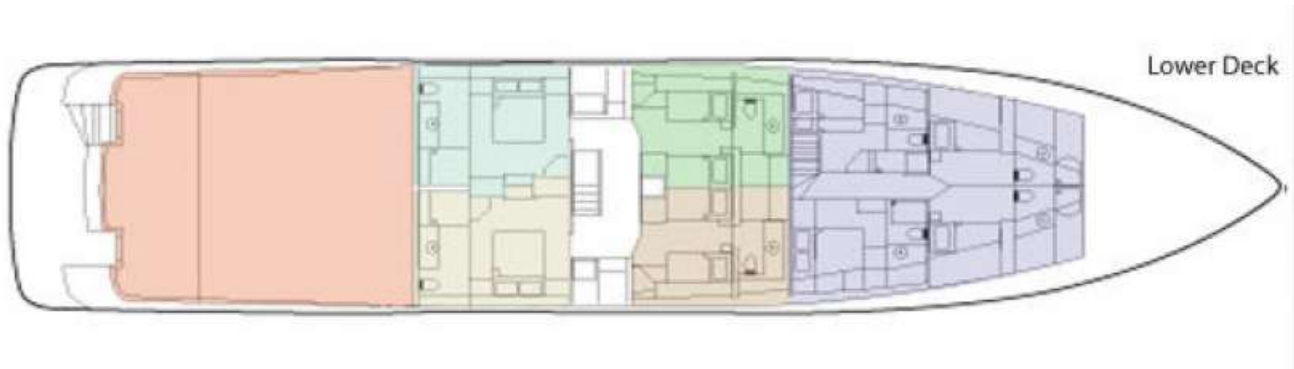


Main deck

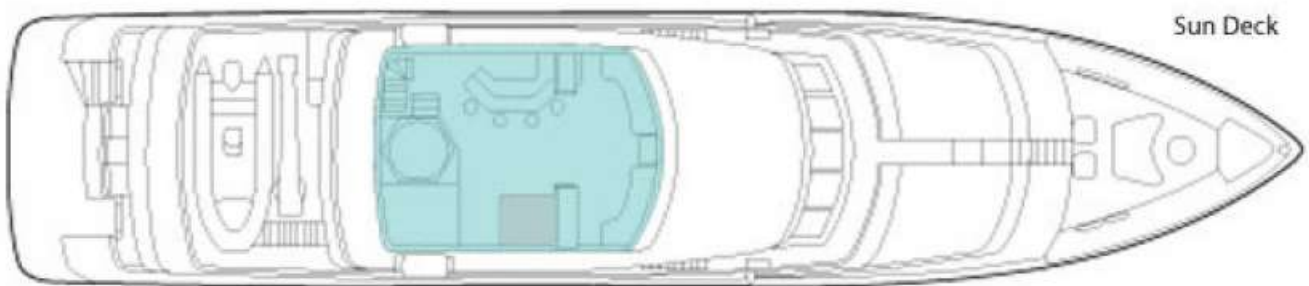


Main Deck

Lower deck



Upper deck



Sun Deck